

# SMA1

## Touch Metal Piezo Switch



## Momentary Piezo Switch

### Description

Touch Metal Piezo Switch, 22mm mounting diameter, PG-16 thread, 28mm flat actuation area. Metal housings are milled, one piece construction and mounted with a nut. Aluminum housings are available in Silver, Red, Black, Green, Gold or Blue anodization.

### Approvals

- MIL-STD - 810C, 202E, 461B, 462
- CE - EVERSITCH products comply with Directives 2006/95/EEC for low voltage components.
- IP Rating – IP69K Compatible with IEC 60529; EN 60529
- EMC: Directive 2004/108/EWG

### Characteristics

- Proven Reliability: Tested for 50,000,000 cycles
- Weatherproof: Used in harshest outdoor conditions
- Touch Activated: Operable with gloves, tools, etc.
- Sterilizable: Wash down proof up to 100 BAR
- Vandal Resistant: For use in high traffic and abusive areas
- Zero power required for switch operation
- Mimics a dry contact switch closure
- Eliminates RFI, EMI and ESD issues
- Five year warranty

### Customized Options

A wide range of design options are available: connectors, switch function (prolonged, toggle, N.C., continuous, timer, slide and programmable types), current rating (up to 10A), graphics and housing dimensions and materials. We offer an embedded CPU for data output compatible with various communication protocols. Temperature compensated and thermal shock proof versions available as well.

### References

SMA2

## TECHNICAL DATA

### Electrical Data

|                         |                        |
|-------------------------|------------------------|
| Switch Function         | N.O. Momentary         |
| Switch Voltage          | 0-24V AC/DC            |
| Switch Current          | 0.2A std (0.5A option) |
| Rated Breaking Capacity | 1W                     |
| Operating Cycles        | >50,000,000            |
| Switch Resistance OFF   | > 5 MΩ                 |
| Switch Resistance ON    | < 20 Ω                 |
| Capacity                | 30 pF                  |
| Pulse Duration          | 125-300mS              |
| Contact Configuration   | Free polarity          |

### Mechanical Data

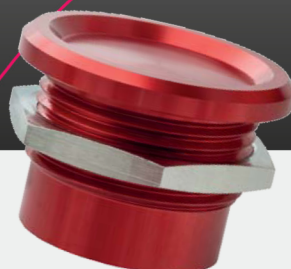
|                   |   |
|-------------------|---|
| Housing Materials | Aluminum 6061 T651 or Stainless Steel (303/304) |
| Actuating Force   | 3-5 Newton                                      |
| Connection        | 2x22 gauge wires                                |
| Actuating Travel  | 0.002 mm  |
| Shock Protection  | IK 06   |
| Fastening Torque  | 2.5 Nm  |

### Environmental Data

|                       |                        |
|-----------------------|------------------------|
| Operating Temperature | -40 to +125 °C         |
| Storage Temperature   | -40 to +125 °C         |
| IP-Protection         | IP69K (front and back) |

# SMA2

## Touch Metal Piezo Switch



## Momentary Piezo Switch

### Description

Touch Metal Piezo Switch, 22mm mounting diameter, PG-16 thread, 28mm recessed actuation area. Metal housings are milled, one piece construction and mounted with a nut. Aluminum housings are available in Silver, Red, Black, Green, Gold or Blue anodization.

### Approvals

- MIL-STD - 810C, 202E, 461B, 462
- CE - EVERSITCH products comply with Directives 2006/95/EEC for low voltage components.
- IP Rating – IP69K Compatible with IEC 60529; EN 60529
- EMC: Directive 2004/108/EWG

### Characteristics

- Proven Reliability: Tested for 50,000,000 cycles
- Weatherproof: Used in harshest outdoor conditions
- Touch Activated: Operable with gloves, tools, etc.
- Sterilizable: Wash down proof up to 100 BAR
- Vandal Resistant: For use in high traffic and abusive areas
- Zero power required for switch operation
- Mimics a dry contact switch closure
- Eliminates RFI, EMI and ESD issues
- Five year warranty

### Customized Options

A wide range of design options are available: connectors, switch function (prolonged, toggle, N.C., continuous, timer, slide and programmable types), current rating (up to 10A), graphics and housing dimensions and materials. We offer an embedded CPU for data output compatible with various communication protocols. Temperature compensated and thermal shock proof versions available as well.

### References

SMA1

## TECHNICAL DATA

### Electrical Data

|                         |                        |
|-------------------------|------------------------|
| Switch Function         | N.O. Momentary         |
| Switch Voltage          | 0-24V AC/DC            |
| Switch Current          | 0.2A std (0.5A option) |
| Rated Breaking Capacity | 1W                     |
| Operating Cycles        | >50,000,000            |
| Switch Resistance OFF   | > 5 MΩ                 |
| Switch Resistance ON    | < 20 Ω                 |
| Capacity                | 30 pF                  |
| Pulse Duration          | 125-300mS              |
| Contact Configuration   | Free polarity          |

### Mechanical Data

|                   |   |
|-------------------|---|
| Housing Materials | Aluminum 6061 T651 or Stainless Steel (303/304) |
| Actuating Force   | 3-5 Newton                                      |
| Connection        | 2x22 gauge wires                                |
| Actuating Travel  | 0.002 mm  |
| Shock Protection  | IK 06   |
| Fastening Torque  | 2.5 Nm  |

### Environmental Data

|                       |                        |
|-----------------------|------------------------|
| Operating Temperature | -40 to +125 °C         |
| Storage Temperature   | -40 to +125 °C         |
| IP-Protection         | IP69K (front and back) |

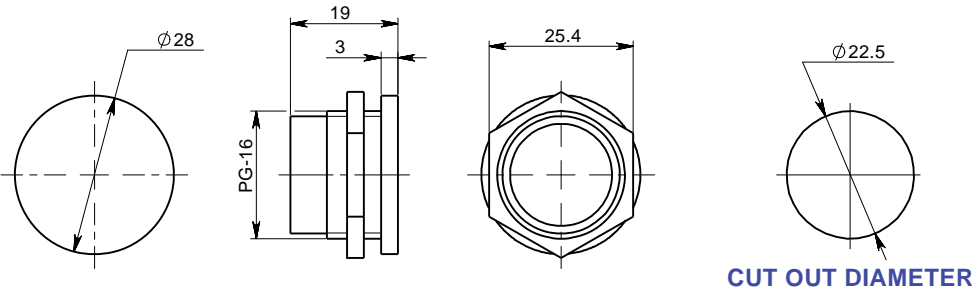
# SMA, SMF and SBS

## Momentary Switches

|          | Diameter | Face | Function | Voltage | Connection | Material   | Color  |
|----------|----------|------|----------|---------|------------|--|--|
| <b>S</b> |          |      |          |         |            |  |  |
|          |          |      |          |         |            |  | <b>N</b> Natural (only option for Steel)<br><b>B</b> Black<br><b>R</b> Red<br><b>G</b> Green<br><b>O</b> Gold<br><b>L</b> Blue |
|          |          |      |          |         |            |  | <b>Anodize Color</b>   |
|          |          |      |          |         |            | <b>1</b> Aluminum Type 6061 T651<br><b>2</b> Stainless Steel Type 303/304  |  |
|          |          |      |          |         |            | <b>Housing material</b>  |  |
|          |          |      |          |         |            | <b>P</b> Pins<br><b>W</b> Wires 22 AWG 30cm standard<br><b>C</b> Cable 60cm standard   |  |
|          |          |      |          |         |            | <b>Connection</b>  |  |
|          |          |      |          |         |            | <b>A</b> 0-24V 0.2A<br><b>B</b> 0-24V 1.0A<br><b>E</b> 0-24V 0.125A for N.Closed types   |  |
|          |          |      |          |         |            | <b>Voltage and Current</b>   |  |
|          |          |      |          |         |            | <b>A</b> N.O.<br><b>B</b> N.Closed (0.125A only)<br><b>C</b> 6 sec prolonged contact (N.O.)  |  |
|          |          |      |          |         |            | <b>Switch Function</b>   |  |
|          |          |      |          |         |            | <b>1</b> Flat face<br><b>2</b> Recessed face<br><b>4</b> Recessed face - square head<br><b>5</b> Flat face-chamfered edge 18mm<br><b>6</b> Flat face-low profile | SMFstyle only  |
|          |          |      |          |         |            | <b>Face style</b>  |  |
|          |          |      |          |         |            | <b>MA</b> 22mm dia. mounting hole<br><b>MF</b> 16 or 18mm(SMF5) dia. mounting hole<br><b>BS</b> 19.5mm dia. mounting hole  |  |
|          |          |      |          |         |            | <b>Mounting Diameter</b>   |  |

# EVERSWITCH TOUCH METAL SWITCHES

SMA1



SMA2

