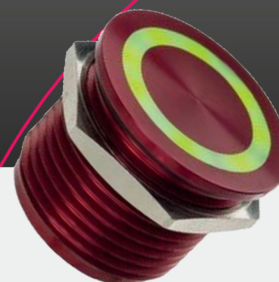


SBR11

Ring Illuminated Piezo Switch



Illuminated Switch

Description

Touch Metal Piezo Switch, 22mm mounting diameter, 22x1.5mm thread, 25mm flat actuation area, ring illuminated with multi-color RGB LEDs (12 or 24V). Metal housings are milled, one piece construction and mounted with a nut. Aluminum housings are available in Silver, Red, Black, Green, Gold or Blue anodization.

Approvals

- ISO 9001:2015
- CE: EverSwitch products comply with Directives
- 2006/95/EEC for low voltage components.
- IP Rating: IP68/IP69 compatible with IEC 60529; EN 60529
- EMC: Directive 2004/108
- Shock protection, RoHS Compliant.

Characteristics

- Proven Reliability: Tested for 50,000,000 cycles
- Weatherproof: Used in harshest outdoor conditions
- Touch Activated: Operable with gloves, tools, etc.

- Sterilizable: Wash down proof up to 100 BAR
- Vandal Resistant: For use in high traffic and abusive areas
- Zero power required for keypad operation
- Mimics a dry contact switch closure
- Eliminates RFI, EMI and ESD issues
- Five year warranty

Customized Options

A wide range of design options are available: connectors switch function (prolonged, toggle, N.C., continuous, timer, slide and programmable types), current rating (up to 10A), graphics and housing dimensions and materials. We offer an embedded CPU for data output compatible with various communication protocols. Temperature compensated and thermal shock proof versions available as well.

References

SBR 22 , SBR 33 , SBR 44

TECHNICAL DATA

Electrical Data

Switch Function	N.O. Momentary
Switch Voltage	0-24 AC/DC
Switch Current	0.2A std (0.5A option)
Rated Breaking Capacity	1W
Operating Cycles	>50,000,000
Switch Resistance OFF	> 5 MΩ
Switch Resistance ON	< 20 Ω
Capacity	30 pF
Pulse Duration	125-300m
Contact Configuration	Free polarity

Mechanical Data

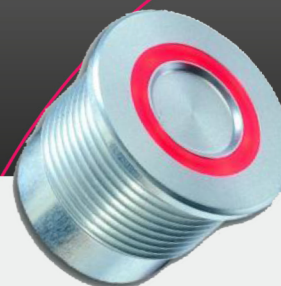
Housing Materials	Aluminum 6061 T651 or Stainless Steel (303/304)
Actuating Force	3-5 Newton
Illuminated Ring	Polycarbonate
Connection	4 wires 24 AWG
Actuating Travel	0.002 mm
Shock Protection	IK 06
Fastening Torque	2.5 Nm

Environmental Data

Operating Temperature	-20 to +70 °C
Storage Temperature	-20 to +85 °C
IP-Protection	IP69K (front and back)

SBR22

Ring Illuminated Piezo Switch



Illuminated Switch

Description

Touch Metal Piezo Switch, 22mm mounting diameter, 22x1mm thread, 25mm flat actuation area, ring illuminated with multi-color RGB LEDs (12 or 24V). Metal housings are milled, one piece construction and mounted with a nut. Aluminum housings are available in Silver, Red, Black, Green, Gold or Blue anodization.

Approvals

- ISO 9001:2015
- CE: EverSwitch products comply with Directives
- 2006/95/EEC for low voltage components.
- IP Rating: IP68/IP69 compatible with IEC 60529; EN 60529
- EMC: Directive 2004/108
- Shock protection, RoHS Compliant.

Characteristics

- Proven Reliability: Tested for 50,000,000 cycles
- Weatherproof: Used in harshest outdoor conditions
- Touch Activated: Operable with gloves, tools, etc.

- Sterilizable: Wash down proof up to 100 BAR
- Vandal Resistant: For use in high traffic and abusive areas
- Zero power required for keypad operation
- Mimics a dry contact switch closure
- Eliminates RFI, EMI and ESD issues
- Five year warranty

Customized Options

A wide range of design options are available: connectors switch function (prolonged, toggle, N.C., continuous, timer, slide and programmable types), current rating (up to 10A), graphics and housing dimensions and materials. We offer an embedded CPU for data output compatible with various communication protocols. Temperature compensated and thermal shock proof versions available as well.

References

SBR22, SBR33, SBR44

TECHNICAL DATA

Electrical Data

Switch Function	N.O. Momentary
Switch Voltage	0-24 AC/DC
Switch Current	0.2A std (0.5A option)
Rated Breaking Capacity	1W
Operating Cycles	>50,000,000
Switch Resistance OFF	> 5 M Ω
Switch Resistance ON	< 20 Ω
Capacity	30 pF
Pulse Duration	125-300m
Contact Configuration	Free polarity

Mechanical Data

Housing Materials	Aluminum 6061 T651 or Stainless Steel (303/304)
Actuating Force	3-5 Newton
Illuminated Ring	Polycarbonate
Connection	4 wires 24 AWG
Actuating Travel	0.002 mm
Shock Protection	IK 06
Fastening Torque	2.5 Nm

Environmental Data

Operating Temperature	-20 to +70 °C
Storage Temperature	-20 to +85 °C
IP-Protection	IP69K (front and back)

SBR33

Ring Illuminated Piezo Switch



Illuminated Switch

Description

Metal Piezo Switch, 27mm mounting diameter, 27x1.5mm thread, 31mm recessed actuation area, ring illuminated with multicolor RGB LEDs (12 or 24V). Metal housings are milled one piece construction and mounted with a nut. Aluminum housings are available in Silver, Red, Black, Green, Gold or Blue anodization

Approvals

- ISO 9001:2015
- CE: EverSwitch products comply with Directives
- 2006/95/EEC for low voltage components.
- IP Rating: IP68/IP69 compatible with IEC 60529; EN 60529
- EMC: Directive 2004/108
- Shock protection, RoHS Compliant.

Characteristics

- Proven Reliability: Tested for 50,000,000 cycles
- Weatherproof: Used in harshest outdoor conditions

- Touch Activated: Operable with gloves, tools, etc.
- Sterilizable: Wash down proof up to 100 BAR
- Vandal Resistant: For use in high traffic and abusive areas
- Zero power required for keypad operation
- Mimics a dry contact switch closure
- Eliminates RFI, EMI and ESD issues
- Five year warranty

Customized Options

A wide range of design options are available: connectors switch function (prolonged, toggle, N.C., continuous, timer, slide and programmable types), current rating (up to 10A), graphics and housing dimensions and materials. We offer an embedded CPU for data output compatible with various communication protocols. Temperature compensated and thermal shock proof versions available as well.

References

SBR 11, SBR 22, SBR 44

TECHNICAL DATA

Electrical Data

Switch Function	N.O. Momentary
Switch Voltage	0-24 AC/DC
Switch Current	0.2A std (0.5A option)
Rated Breaking Capacity	1W
Operating Cycles	>50,000,000
Switch Resistance OFF	> 5 M Ω
Switch Resistance ON	< 20 Ω
Capacity	30 pF
Pulse Duration	125-300m
Contact Configuration	Free polarity

Mechanical Data

Housing Materials	Aluminum 6061 T651 or Stainless Steel (303/304)
Actuating Force	3-5 Newton
Illuminated Ring	Polycarbonate
Connection	4 wires 24 AWG
Actuating Travel	0.002 mm
Shock Protection	IK 06
Fastening Torque	2.5 Nm

Environmental Data

Operating Temperature	-20 to +70 °C
Storage Temperature	-20 to +85 °C
IP-Protection	IP69K (front and back)

SBR44

Ring Illuminated Piezo Switch



Illuminated Switch

Description

Metal Piezo Switch, 27mm mounting diameter, 27x1.5mm thread, 31mm flat actuation area, ring illuminated with multi-color RGB LEDs (12 or 24V). Metal housings are milled, one piece construction and mounted with a nut. Aluminum housings are available in Silver, Red, Black, Green, Gold or Blue anodization.

Approvals

- ISO 9001:2015
- CE: EverSwitch products comply with Directives
- 2006/95/EEC for low voltage components.
- IP Rating: IP68/IP69 compatible with IEC 60529; EN 60529
- EMC: Directive 2004/108
- Shock protection, RoHS Compliant.

Characteristics

- Proven Reliability: Tested for 50,000,000 cycles
- Weatherproof: Used in harshest outdoor conditions
- Touch Activated: Operable with gloves, tools, etc.

- Sterilizable: Wash down proof up to 100 BAR
- Vandal Resistant: For use in high traffic and abusive areas
- Zero power required for keypad operation
- Mimics a dry contact switch closure
- Eliminates RFI, EMI and ESD issues
- Five year warranty

Customized Options

A wide range of design options are available: connectors switch function (prolonged, toggle, N.C., continuous, timer, slide and programmable types), current rating (up to 10A), graphics and housing dimensions and materials. We offer an embedded CPU for data output compatible with various communication protocols. Temperature compensated and thermal shock proof versions available as well.

References

SBR 11, SBR 22, SBR 33

TECHNICAL DATA

Electrical Data

Switch Function	N.O. Momentary
Switch Voltage	0-24 AC/DC
Switch Current	0.2A std (0.5A option)
Rated Breaking Capacity	1W
Operating Cycles	>50,000,000
Switch Resistance OFF	> 5 M Ω
Switch Resistance ON	< 20 Ω
Capacity	30 pF
Pulse Duration	125-300m
Contact Configuration	Free polarity

Mechanical Data

Housing Materials	Aluminum 6061 T651 or Stainless Steel (303/304)
Actuating Force	3-5 Newton
Illuminated Ring	Polycarbonate
Connection	4 wires 24 AWG
Actuating Travel	0.002 mm
Shock Protection	IK 06
Fastening Torque	2.5 Nm

Environmental Data

Operating Temperature	-20 to +70 °C
Storage Temperature	-20 to +85 °C
IP-Protection	IP69K (front and back)

Illuminated Switches --- Types SBR and SML

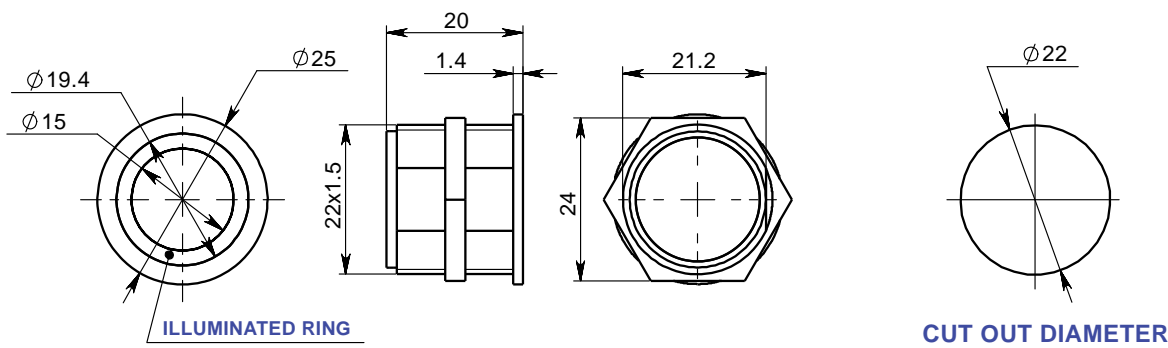
Momentary types

	Illumination	Face	Function	Voltage	Connection	LED Color	LED Voltage	Material	Color
S									
									N Natural (only option for Steel) B Black R Red G Green O Gold L Blue Anodize Color
								1 Aluminum 2 Stainless Steel (303/304) Housing material	
								05 5 Volt LED - SML type only 12 12 Volt LED 24 24 Volt LED LED Voltage	
								1 Red 2 Green 3 Amber 4 Red/Green 5 Blue 6 White 8 R-G-B (Red, green blue: SBR ring Illum only) LED Color	
								P Pins W Wires 12" (30cm) standard, 22 gauge C Cable 100cm standard Connection	
								A 0-24V 0.2A (0.125A N. Closed) B 0-24V 0.5A Voltage and Current	
								A N.O. Momentary B N.O 0.5A Momentary C 6 sec prolonged contact (N.O.) E N.Closed (0.125A only) Switch Function	
								1 Flat face - 22mm dia. mounting hole 2 Recessed face - 22mm dia. mounting hole 3 SBR Recessed face - 27mm dia. mounting hole 3 SML Flat face - 28.5mm dia. mounting hole 4 SBR Flat face - 27mm dia. mounting hole Face Style and Mounting Diameter	
								B R Ring Illuminated M L Point Illuminated Type	

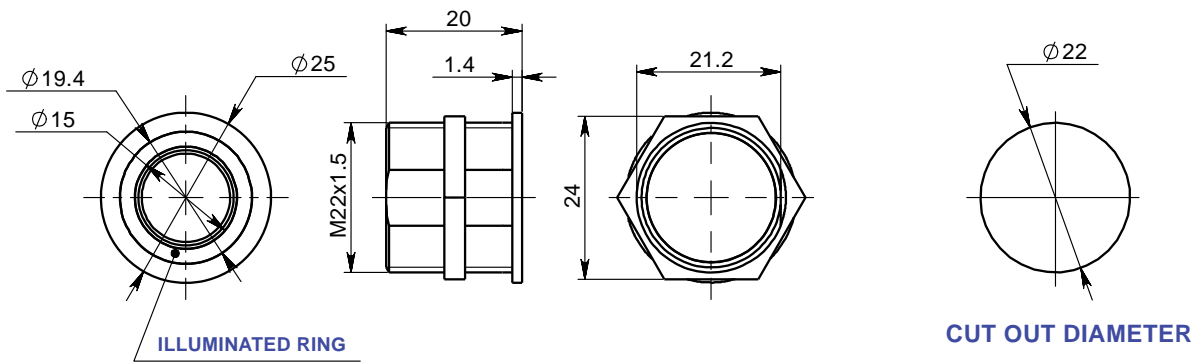
EXAMPLE: SBR1AAW8242N is a Ring Illuminated, 22mm dia. switch with a Flat Face, N.O., Momentary function, with RGB 24V LED in a Stainless Steel, Natural color Housing.

EVERSWITCH RING ILLUMINATED PIEZO SWITCHES

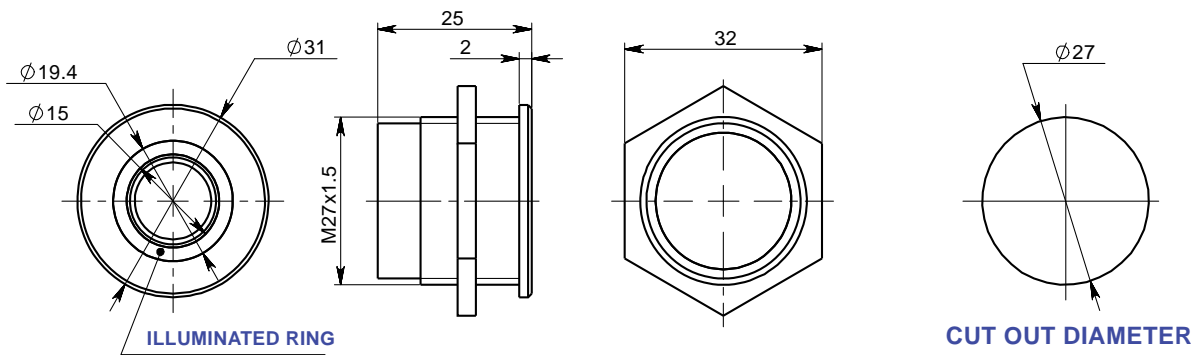
SBR1



SBR2



SBR3



SBR4

